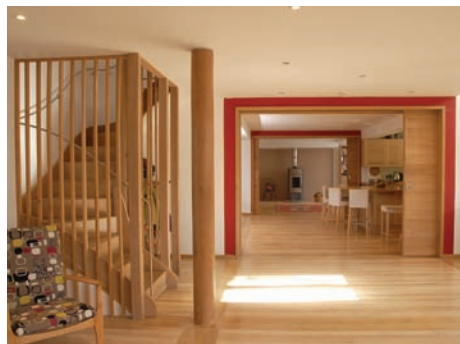


# Potter & Holmes architects



We excel in cutting-edge, low energy design. We aim to exceed our clients' expectations with high quality, stimulating and practical investments for the future.

Contact us for an informal consultation about your upcoming project.



**London Office**  
27 Bulwer Street  
London W12 8AR  
T. 020 8749 3123

**Gloucester Office**  
Suite V 2 St Aldate Street  
Gloucester GL1 1RP  
T. 01452 526 330

[mail@potterandholmes.com](mailto:mail@potterandholmes.com)  
[www.potterandholmes.com](http://www.potterandholmes.com)